

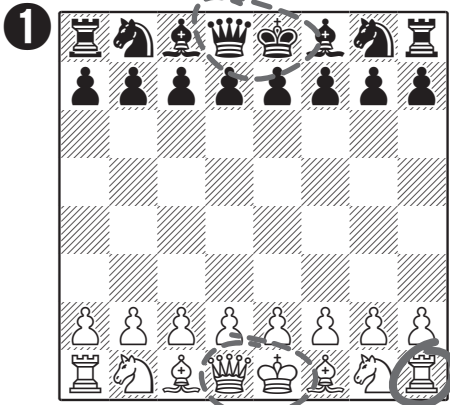
Are we ready to start?



Here are the answers to the 'are we ready to start' puzzle sheet. How did you get on?

Top tip: Put your hands on the corner squares of the board before you set the pieces up. Make sure there's a white square under your right hand.

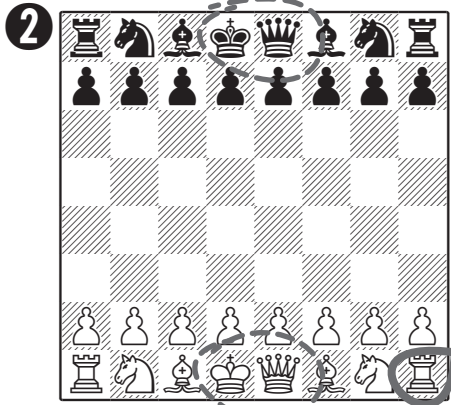
Top tip: The white queen has a long white dress that trails on the ground and makes it look white. And the black queen has a long black dress. (Kings don't usually wear dresses.)



RIGHT WRONG

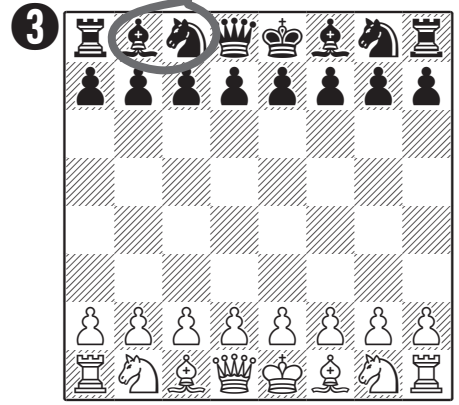
Board wrong way round.

So it's hard to get the kings and queens the right way round.



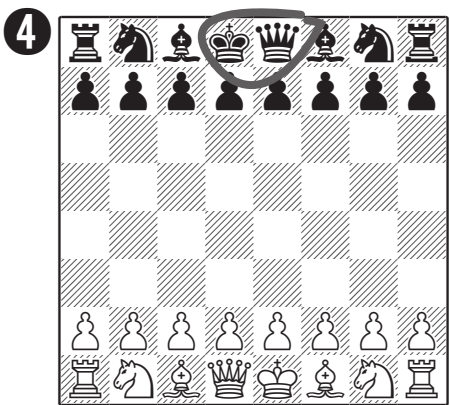
RIGHT WRONG

Board wrong way round.



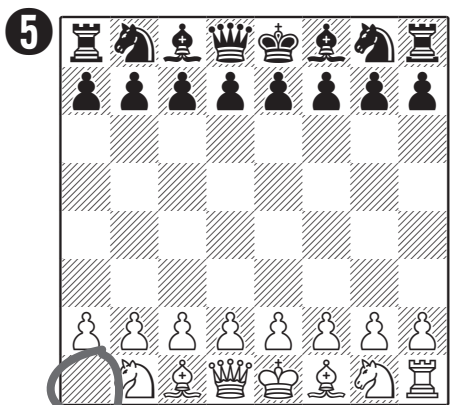
RIGHT WRONG

Bishop and knight wrong way round.



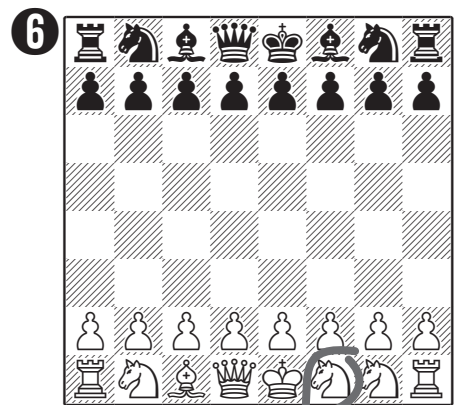
RIGHT WRONG

Black king and queen wrong way round.



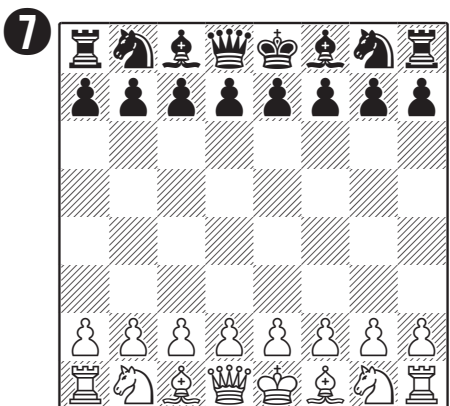
RIGHT WRONG

Missing white rook.



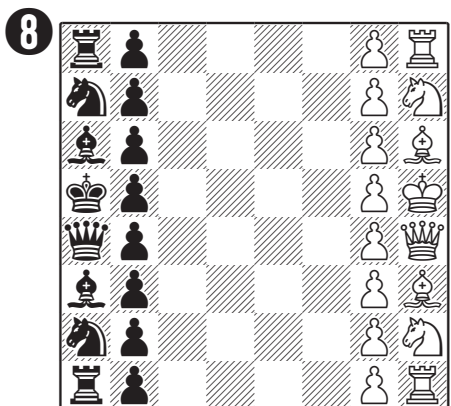
RIGHT WRONG

White has three knights.



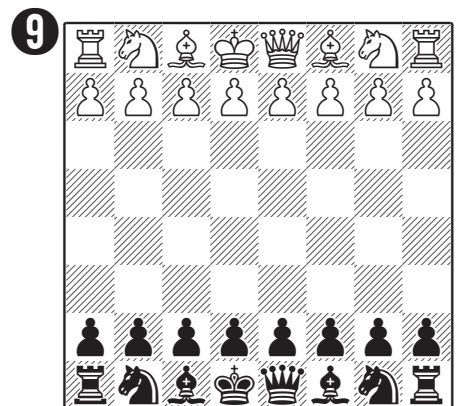
RIGHT WRONG

This is fine.



RIGHT WRONG

This is also fine - we're just looking at it sideways on.



RIGHT WRONG

This is fine again - we're looking from black's side.